



2024



PRODUCTS AND SERVICES GUIDE



AA Products Inc.

WHERE GREAT CRAFTSMANSHIP MEETS GREAT PRICE.

FROM OUR HANDS TO YOURS

Founded with the conviction that everyone should be able to afford strong, high quality and precision manufactured utility accessories, Affordable Aftermarket Products has been a pioneer of competitive commercial upfit solutions for over 20 years. As a manufacturer of truck and van racks, shelves, partitions, and more, our innovative custom design process allows us to build your perfect upfit solution at a fraction of the cost.

We're a company built by tradespeople, mechanics, and the type of people who'd take apart the lawnmower to see how it worked. We design our equipment with the needs of tradespeople in mind because we've

been in your boots: digging around the van for a misplaced tool, rattling equipment going over speed bumps, and of course, holding hardware with our teeth. We understand the needs of tradespeople, because like you, we work with our hands. Our goal is to make your business more profitable by maximizing space, giving you more freedom and decreasing downtime to have more customers.

HIGH QUALITY, HIGH PRECISION

From design, engineering, manufacturing, testing, and quality control, we're a one-stop shop. All our products are subjected to batteries of tests throughout our process to ensure

everything we make adheres to strict, high precision manufacturing protocols.

- ISO 9001 certified, we know the quality of our material is strong enough for the toughest jobs.
- We use a patented blend of high strength steel or aluminum alloys for truck and van racks and interiors. All material has passed tests for tolerance, environmental factors, and more.
- Corrosion resistant, powder coated, and durable, our racks are used to carry everything from lumber, construction equipment, and other heavy-duty loads.
- Our equipment is easy to install or adjust. We have both permanent and temporary installation options depending on your needs.
- Our design team will work with you to help develop your ideal upfit and assist you at every step of the process. You'll always get a live person. No robots or phone trees.

COMMITMENT TO EXCELLENCE

Our equipment is designed to be where great craftsmanship meets great price. We know that whenever someone pulls a ladder from one of our racks or locks their custom-made tool in one of our cabinets, that they're being used by someone just as committed to excellent workmanship as we are, and we're proud of that. Whether you're a weekend warrior tired of hearing loose screws while driving, just got your contractor's license, or a company looking to outfit your fleet, we've got you covered! ●

Find out more, visit

www.aaproductsinc.com.





Affordable Aftermarket Products

WHERE GREAT CRAFTSMANSHIP MEETS GREAT PRICE

HIGH QUALITY, HIGH PRECISION

- Precision made
- Heavy duty and durable
- Solutions for any truck or van
- Affordable and competitive pricing



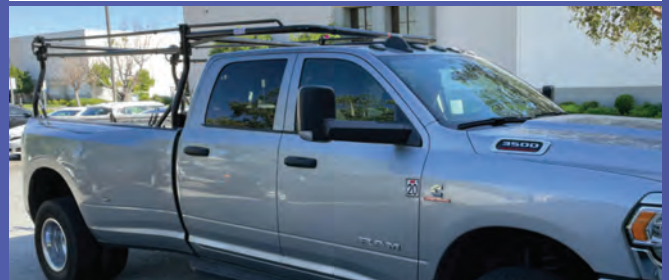
VAN SHELVING & PARTITIONS



VAN UTILITY RACK SYSTEMS



H-TYPE RACK SYSTEMS



FULL RACK TRUCK SYSTEMS



VAN RACK ACCESSORIES



TRUCK RACK ACCESSORIES

Call or email now to get a complimentary quote

888-806-3972

service@aaproductsinc.com • www.aaproductsinc.com

BOSS

TRANSFORMING TRUCK MOUNTED UNDERDECK AIR AND POWER SYSTEMS

The BOSS Air and Power Truck Mounted Underdeck Systems are the most advanced and user friendly in the market today. Based on our revolutionary rotary screw air compressor, the BOSSAIR 185G exploits all the latest engineering advances in rotary screw and AC power development for the work truck industry.

Leading off with the BOSS BCAN Digital Interface which takes advantage of the vehicles J1939 electronic connection to communicate effortlessly between the vehicle, air compressor and power systems. The BOSS BCAN can also add other functionality to your vehicle such as hydraulics, and other power related components. And the BCAN is not just a monitor, with our system intelligence, the BCAN will notify the operator of any maintenance concerns and will display any system issues that could prevent you for performing the task at hand. Additionally, we have continued to make improvements on the most efficient airend in production today. On our latest production model of the BOSS 185 CFM Airend, we have modified the discharge from its traditional position to a radial discharge position, creating 3-4 additional inches of ground clearance for the most challenging job sites. As room on the underneath of the new era trucks becomes more cramped, we have developed a new smaller, lower profile 10" separator tank which increases the ground clearance even more!

Our BOSSAIR 185G compressor/generator design has been integrated into a one-piece design producing up to 10kW of A/C power. No need for a separate gearbox and additional maintenance concerns, as the compressor and generator mount together in the same casting. To



help facilitate a more efficient install process, the Air/oil manifold are now separated into two smaller manifolds for easier installation and more versatile location opportunities. The air manifold can be mounted anywhere the installer wants and has 3 different configurations, maximizing every inch of the bracket design. The oil manifold also has multiple different mounting configurations, but we have also designed the compressor mounting foot to allow for installation and optimal oil flow and hose routing. Our new bracket system for mounting the compressor, and the air oil manifolds allows for the flexibility of “no-drilling mounting” on most applications! And finally, with our “Spin-On” filter design, the service time is now down to minutes instead of hours when compared to the competitions.

As you can see, BOSS Industries continues to lead the way on intelligent designed mobile compressor systems today and we back it with

our Shieldworks + Lifetime Warranty. Utilizing our lubricants and filter service kits not only saves you money but time as well. All our service kits are available through our extensive distributor network or online at www.store.bossair.com.

BOSS Industries not only manufactures air and power solutions for the work truck industry, but we are a leading provider of quality products for Rail Roads, Spray Foam and Vapor Recovery markets. ●

All this and more at
BOSSair.com.



NINE HUNDRED CFM!



INTRODUCING THE BOSSAIR 900!

900 CFM of **BIG** mobile air all on one chassis, all on one vehicle. The BOSSAIR 900 features a unique twin rotary screw design producing enough air for the biggest jobs. In addition, the BOSSAIR 900 design can operate in a low speed (700 CFM) and hi speed (900) configuration for even more flexibility! . . . *Only at BOSS!*

BOSSair.com | 800/635-6587

BOSS[®]
engineered **AIR/POWER** systems



Brandmotion

A TRUSTED LEADER IN AFTERMARKET APPLICATIONS

Brandmotion was founded in 2006 as a spin-off from Johnson Controls, Inc. Headquartered in Novi, Michigan, they sit by the bustling hub of automotive innovation found in the Motor City.

Since its inception, Brandmotion has emerged as a trusted leader in aftermarket applications of OEM level technology, setting itself apart as a pivotal partner in driving safety and technology excellence.

At the heart of Brandmotion's mission is a dedication to creating safer roads by enhancing situational awareness for a diverse range of drivers, including commercial fleets, RV enthusiasts, and everyday passenger vehicle owners. With a focus on aftermarket solutions, Brandmotion provides cutting-edge technology to equip vehicles with the latest safety features, improving not only the driver experience but also operational efficiency and overall profitability for their customers.

What sets Brandmotion apart is its unwavering commitment to innovation. From vision systems and blind spot monitoring to cameras, displays, proximity sensors, and collision

avoidance technology, Brandmotion offers a comprehensive suite of products tailored to meet the diverse needs of its clientele.


These products not only enhance safety for drivers and passengers but also extend its impact to include cargo, pedestrians, and the overall road ecosystem.

Brandmotion has solidified its position as an industry leader through strategic partnerships with OEM industry leaders in the fleet and RV markets. These collaborations enable Brandmotion to integrate its innovative safety solutions seamlessly into the offerings of long-standing automotive manufacturers, ensuring that innovative technology is accessible to a broader range of drivers. These partnerships exemplify Brandmotion's commitment to advancing road safety on a comprehensive scale, driving forward the collective effort to improve road safety for everyone.

By integrating Brandmotion's advanced safety technology into fleets, businesses gain more than just enhanced safety measures; they also reap significant financial benefits. Implementing these cutting-edge solutions effectively prevent collisions,

minimizing the risk of costly vehicle damage, injuries, and potential legal liabilities. Moreover, by reducing the occurrence of collisions, fleets experience decreased downtime, ensuring that vehicles remain operational and productive. With fewer disruptions to their operations, businesses can optimize their resources and maximize productivity, leading to increased overall profitability. Brandmotion distinguishes itself through its dedication to integration engineering and support, ensuring the seamless incorporation and enduring effectiveness of its products.

One of Brandmotion's key strengths lies in its ability to offer customized solutions to meet the unique requirements of its clients. With an in-house engineering and design team, Brandmotion can tailor existing systems or develop entirely new ones to address specific customer needs, providing unparalleled flexibility and adaptability in a rapidly evolving industry landscape. Their work to create tailored product packages empower businesses to achieve greater success and sustainability in their operations. This commitment to excellence has established Brandmotion as the preferred partner for industry leaders seeking to enhance the safety and efficiency of their fleets.

By revolutionizing the driving experience through innovation and customization, Brandmotion stands at the forefront of vehicle technology. Through its rich history of innovation and commitment to excellence, Brandmotion continues to drive advancements in road safety, setting new standards for the industry and ensuring a safer, more secure future for drivers everywhere. 



Find out more, visit www.brandmotion.com.



Changing Fleet Ownership Today Improving Profitability Forever

**SURROUNDTVUE®
360 CAMERAS**



**HEAVY DUTY
CAMERAS**



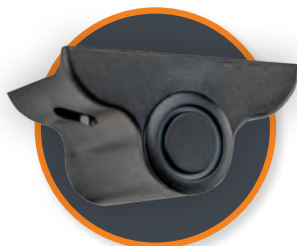
**FULLVUE® CAMERA
MIRROR SYSTEM**



**RADAR
BLINDSPOT**



**Fully-Integrated
Safety
Solutions**



**SENSOR
INTEGRATION**



**TOWING VISION
SYSTEMS**



**CARGO
CAMERAS**



**ADAS &
DMS SYSTEM**

Brandmotion seamlessly integrates tomorrow's technology into today's vehicles. We deliver everything from vision systems, sensors, radar, displays, collision avoidance, installation and custom engineering services. Brandmotion safety solutions are designed to improve the driver experience, improve your bottom line, and give your business the ultimate peace of mind.

Learn More About Our Fully-Integrated Safety Solutions



Scan or Visit Brandmotion.com

BYD

ELECTRIFYING THE FUTURE OF COMMERCIAL FLEETS

BYD isn't just another truck manufacturer jumping on the electric bandwagon. Founded on a mission of "Technological Innovations for a Better Life," BYD is a global leader in new energy vehicles and battery technology. The company's commitment to sustainability and efficiency drives the design of their Class 6 and Class 8 electric trucks, offering a compelling alternative for fleets looking to take their operations into the future.

WHY CONSIDER BYD? THE ELECTRIC SHIFT, SIMPLIFIED

Commercial fleets are under increasing pressure to reduce their environmental impact, but obstacles like upfront costs and operational concerns remain. BYD understands this, and our approach focuses on making the transition to electric practical and profitable:

- **Range for the Real World.** BYD prioritizes usable range that addresses common commercial routes, taking away the worry of being stranded with an empty battery.
- **Charging Without the Headaches.** We can connect you with fast charging solutions and work with you to design a charging infrastructure that fits your operation.
- **Long-Term Savings.** While the initial purchase price might be a bit higher, don't underestimate the massive savings in maintenance and fuel over the truck's lifespan. Federal and local incentives can further offset that upfront cost.



CLASS 6: THE ELECTRIC WORKHORSE EVOLVED

BYD's Class 6 offerings include cab and chassis models, purpose-built refuse trucks, and more. They're changing the game for last-mile delivery, pickup and delivery, and waste collection:

- **Responsive Performance.** No more underpowered electrics. BYD's Class 6 trucks have the pep to handle busy routes, hills, and constant stop-and-go.
- **Quiet Revolution.** Reduced noise benefits drivers and communities, especially on early morning routes.
- **Smarter by Design.** BYD's trucks feature integrated tech that aids with data, route optimization, and fleet management – it's about more than just a fancy screen.

CLASS 8: POWERING EFFICIENT DELIVERY AND DISTRIBUTION

BYD's Class 8 semi-trucks are ideal for regional deliveries, distribution runs, and drayage operations. They're also superstars in yard work with the Class 8 terminal tractors (yard trucks).


- **Routes, Not Roadside Charging.** These trucks offer the range needed for longer regional runs with minimal impact payload capability.

- **Zero-Emission Yard Ops.** Imagine your port, warehouse, or distribution center humming along quietly and without tailpipe emissions – that's what BYD yard trucks bring to the table.
- **Data Drives Efficiency.** BYD's Class 8 trucks analyze and track their performance, helping make data-driven decisions about fleet expansion and operations.

THE BYD ADVANTAGE

- **Battery Confidence.** BYD's lithium iron phosphate batteries are backed by an 8-year warranty.
- **Fleet-Focused Support.** BYD helps fleets of all sizes transition to electric, from truck spec'ing to seamless charging integration.
- **Proven Global Leader.** BYD has been in the electrification game for a long time, and their trucks already dominate in many markets.

READY TO SEE THE BYD DIFFERENCE?

Visit BYD's website (en.byd.com) or contact a representative to explore how their Class 6 and Class 8 trucks could benefit your fleet, your bottom line, and the environment. 

Find out more, visit en.byd.com.

BYD TRUCKS HARD AT WORK



100% Battery
Electric



8-Year Battery
Warranty



26+ Hour
Working Range

8Y

100% Battery Electric Class 8 Truck

The BYD 8Y's core technologies include state-of-the-art batteries, controls and motors. Combined with BYD's advance battery chemistry, the BYD 8Y has the highest endurance in the industry, allowing the truck to work continuous shifts with true zero-emissions.



LAS VEGAS CONVENTION CENTER
MAY 20-23, 2024 | **BYD BOOTH #1645**

BYD Truck LLC
888 E. Walnut St., Suite 200A
Pasadena, CA 91101
info.na@byd.com | (213) 748-3980



FEAL

DESIGN AND PRODUCTION OF LOADING RAMPS.

FEAL is a company that excels in the design and production of loading ramps. Their singular focus on this product category has allowed them to develop unparalleled expertise in the field. Their innovative designs prioritize safety by reducing the risk of falls and trips during manual loading and unloading. The ramps are universally compatible with all cargo vans and feature an efficient installation process that minimizes the need for hardware. Fealramp.com is committed to using only the highest quality materials, sourcing military-grade aluminum locally to ensure the durability and longevity of their products.

Feal loading ramps are designed with the needs of businesses in mind. One of the key features of their ramps is the diamond-shaped mesh that provides traction in any weather. Snow, sleet, and mud are no match for this innovative design, which allows for safe and



efficient loading and unloading in even the most challenging conditions.

Another feature that sets Feal's ramps apart is the double hinge, which provides a smooth transition in and out of the van, regardless of the angle at which the ramp is positioned. This also allows the ramp to be used as a bridge between vehicles or a loading dock, adding versatility to its functionality.


The unique gas struts provide just the right amount of tension for a lightweight, one-handed deployment and stowing away of the ramp. This makes it easy for businesses to quickly and efficiently set up and take down the ramp, saving time and reducing the risk of injury.

In addition, Feal ramps come with optional support legs that can convert the ramp into a working bench in seconds. This feature adds even more value to businesses, providing a convenient and practical solution for on-the-go work.

Overall, Feal loading ramps are designed with the needs of businesses in mind, offering a range of features that add value and enhance efficiency.

In conclusion, Feal loading ramps are an essential tool for businesses that require safe and efficient loading and

unloading of cargo. Their innovative design features, such as the diamond-shaped mesh for traction in any weather, the double hinge for smooth transitions, and the gas struts for easy deployment, set them apart from other ramps on the market. The optional support legs that convert the ramp into a working bench add even more value and versatility. With their commitment to using locally sourced, military-grade aluminum, Feal ensures that their ramps are of the highest quality and durability. Overall, Feal loading ramps are an investment that businesses can rely on to enhance their operations and improve their bottom line.

Feal invites potential customers to reach out and set up demonstrations to see first-hand how their loading ramps can enhance their fleets. Do not miss the opportunity to experience the innovative design and practical features that set Feal ramps apart. Contact Feal today and start thinking about how to improve the efficiency and safety of your operations. 



Find out more, visit
www.fealramp.com.

iRAMP Vehicle

FEAL
...improving life

NEW!



Meet the new **iRAMP Vehicle**
- our newest addition to the **iRAMP** range.

Patented design that make the ramp adapt to any height, seamless transition on and off ramp and new profiles that makes it easy to configure for your needs.
iRamp sets the standard for tailboard ramps!



Our patented articulated top transit plate adjusts to any height without ledges or bumps that complicates loading.



Seamless transition on and off the ramp through our newly developed upper and lower transition plate.

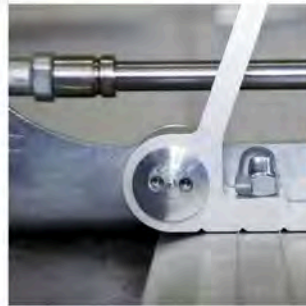
More integrated functions in the profiles - add new functions to your ramp with ease.



Wheels on all two-piece ramps for easier folding/unfolding.



Optimized materials to make the ramp stronger and lighter.
Crashtested for your safety.



Non-lubricated joints for hassle free maintenance.



Scan to explore configurations to fit your van



Booth 1145



info@feal.se

NEXIQ Technologies

eTECHNICIAN DELIVERS POWERFUL DIAGNOSTICS FOR THE WORK TRUCK INDUSTRY

Profitability in the work truck industry is closely tied to an organization's ability to keep vehicles on the road. A truck sidelined for repairs for any length of time can be costly in terms of lost revenue. For this reason, commercial vehicle repair operations feel the pressure to complete repairs as quickly as possible—without compromising quality.

A growing number of repair providers across the country are switching to eTechnician diagnostic software from NEXIQ Technologies to improve the speed, efficiency and accuracy of the vehicle diagnostic phase and help work truck fleets and independent owners maximize vehicle uptime.

By combining extensive coverage for a wide range of vehicles, eTechnician delivers critical diagnostic capability for engines, transmissions, brakes, body, chassis and more. To help repair facilities and fleet managers better understand the benefits of eTechnician, Dave Shock, product manager, Snap-on Business Solutions/NEXIQ Technologies, has provided answers to frequently asked questions concerning commercial vehicle diagnostics and NEXIQ's advanced PC-based software application.

WHAT ARE REPAIR OPERATIONS LOOKING FOR IN VEHICLE DIAGNOSTICS?

Simplicity. Technicians want to have everything right at their fingertips rather than searching multiple applications or locations for the information they need. This includes collecting service information, which can be a challenge.

To address this challenge, NEXIQ partnered with our sister company, Mitchell 1, to bring service information into the equation. The result is a comprehensive, single-source

diagnostic tool designed to provide technicians with fast and accurate diagnostic support.

WHAT VEHICLE MAKES DOES eTECHNICIAN SUPPORT?

Pretty much all commercial vehicles. Everything from semi-trucks to work trucks and last-mile delivery vehicles. This includes the Class M2 Freightliner and Peterbilt medium-duty trucks equipped with either Cummins or Paccar engines and International MV and CV Series medium-duty trucks.

In terms of light- to medium-duty work trucks, eTechnician provides support for GM Savana and Express vans, and trucks with gas and diesel engines. It also supports Ford Transit and E-Series vans, F-Series trucks, and RAM ProMaster vehicles, along with gas and diesel trucks. Furthermore, we offer support for light- to medium-duty vehicles manufactured by Hino Trucks and Isuzu.

WHAT ENGINES DOES eTECHNICIAN SUPPORT?

eTechnician covers all commercial on-highway diesel and gasoline engine equipped vehicles—including those that power the vehicles I previously mentioned.

IS THIS A DIFFERENTIATOR FOR eTECHNICIAN?

eTechnician supports all commercial Cummins and Detroit engines for medium-duty work vehicles, including Freightliner, Peterbilt and International trucks. We also cover gas and diesel engines that power light- to medium-duty GM, Ford, RAM, Hino, and Isuzu vehicles. Not all diagnostic solutions cover engines for this range of vehicles.

DOES eTECHNICIAN SUPPORT THE FCA SECURE GATEWAY MODULE FOR RAM VEHICLES?

Yes. eTechnician supports RAM vehicle model years 2018-2022 with FCA Secure Gateway.

WHICH BI-DIRECTIONAL TESTS DOES eTECHNICIAN SUPPORT?

eTechnician provides unprecedented bi-directional support, including changeable parameters and thousands of special tests, such as DPF Regen, Injector Cutout and SCR performance/system testing, as well as testing designed to get vehicles out of derate.

WHAT ELSE MAKES eTECHNICIAN A UNIQUE DIAGNOSTIC TOOL?

eTechnician allows users to connect to multiple modules on a vehicle simultaneously. You can connect to the engine and transmission and monitor the transmission's shaft speed, engine RPM and engine load at the same time.

DO YOU HAVE TO BE AN EXPERIENCED TECHNICIAN TO USE eTECHNICIAN?

Not at all. We designed eTechnician around the people who use it—technicians. By consulting with techs from day one of the software's development, we created an intuitive, technician-focused diagnostic tool that's simple to learn and easy to use.

DOES NEXIQ OFFER A FREE TRIAL FOR REPAIR OPERATIONS INTERESTED IN TAKING AN eTECHNICIAN FOR A TEST DRIVE?

Absolutely. Repair operations can start a 30-day free trial by visiting nexiq.com/freetrial. ●

[www.nexiq.com/
Product/Detail/859000](http://www.nexiq.com/Product/Detail/859000)



PC-BASED COMMERCIAL VEHICLE DIAGNOSTICS

eTechnician™

One platform. Endless possibilities.

Stay competitive in today's trucking industry with the most comprehensive diagnostics software for heavy, medium, and light-duty engines, transmissions, brakes, body and chassis, and more.

Give it a go with a 30-DAY FREE TRIAL!

Go to nexiq.com/freetrial to get your product key.

NEXIQ
TECHNOLOGIES®

800-639-6774 nexiq.com

Opti-Luxx

WORK TRUCK WARNING LIGHTS

Opti-Luxx Inc., headquartered in Hudsonville, Michigan, is a full-service supplier of LED commercial vehicle lighting. Opti-Luxx offers their customers the best in product development, application engineering, program management, and launch support for new and existing products.

Over 20 years ago, Opti-Luxx pioneered the use of LED lighting technology in commercial vehicle applications by developing the first LED school bus lights. It is an indisputable fact that school buses are the safest vehicles on the roads today, and as the leading supplier of LED school bus lighting, Opti-Luxx plays a significant role in that strong safety reputation. Today, the company has significantly expanded their product offerings to cover the entire commercial vehicle market, including an extensive line of the brightest and best LED signal lighting, work lighting, and a full suite of warning lights for work trucks. The Opti-Luxx commercial vehicle lineup provides increased visibility and safety, situation-specific flash patterns for any roadway scenario, and prices that won't break the bank.

Opti-Luxx understands the current roadway visibility challenge. Currently, there are over 230 million licensed drivers in the United States and that


number continues to grow. Roadways are increasingly crowded, with more distraction points vying for driver attention like mobile devices, animated digital billboards, and increased use of LED lighting styles and configurations for non-commercial vehicles. The company believes it to be essential for fleets to utilize the brightest, best, most innovative, and most rugged and durable warning lights to protect drivers. Opti-Luxx delivers that protection.

Opti-Luxx is driven to innovate and deliver lighting solutions that cut through the visual clutter of today's roadways and help fleets stay visible and safe. Their lighting lineup is install-ready for snowplows, utility vehicles, delivery fleets, road construction and surfacing equipment, agricultural equipment, and all work truck applications. Light formats include beacons, light bars, signal lights, warning lights, work lights, accessory lights, and interior lights for all vehicle types. This wide array of products is focused on safety, but also delivers efficient ways to illuminate work environments for optimum task performance. Opti-Luxx believes that being able to illuminate spaces in and around the vehicle enhances the overall capabilities of work crews to get the job done safely — and efficiently.

All of this can be summarized by the Opti-Luxx core value that "Seeing IS Safety."

Beyond delivering the brightest and best work truck LED lighting products, Opti-Luxx also takes pride in providing superior customer service before, during, and after purchase including:

- On-time delivery and short lead times
- Quality safety products
- Skilled and experienced production team
- Reliability
- Exceptional sales team
- Industry knowledge
- Expert technicians
- Continuous improvement

Opti-Luxx is committed to continuous improvement and providing all customers with exceptional value. Knowledgeable and dedicated work truck lighting specialists pride themselves on being at-the-ready and attentive to questions and needs from customers. The Opti-Luxx team is never more than a phone call away to provide expert advice and guidance. 

Find out more, visit [opti-luxx.com/sales-and-service](https://www.opti-luxx.com/sales-and-service).



Opti-Luxx
THE BRIGHTEST & BEST LED LIGHTS.

Innovative products. Unmatched service. Simple ordering process.
[opti-luxx.com/sales-and-service](https://www.opti-luxx.com/sales-and-service)



Command work zone attention with the brightest and the best.



Installing Opti-Luxx means installing the brightest and best LED lights available.

We believe your fleet deserves safety on roadways jammed with rushing traffic, changing weather, and distracted drivers. So when visibility inside and out matters most, we're there.

At Opti-Luxx, we're continuously innovating and improving our work truck lighting products to make sure you command high-visibility attention in any environment.

For details on exciting new products ready to install today, visit opti-luxx.com or contact sales@opti-luxx.com.

 **National Work Zone Awareness Week is April 15–19, 2024. More details are available at: www.nwzaw.org or www.atssa.com**



Opti-Luxx

THE BRIGHTEST & BEST LED LIGHTS.

Copyright © 2024 Opti-Luxx Inc. All rights reserved.

Follow us on
LinkedIn

Optronic International

THE FASTEST-GROWING VEHICLE LIGHTING AND HARNESS MANUFACTURER IN U.S.

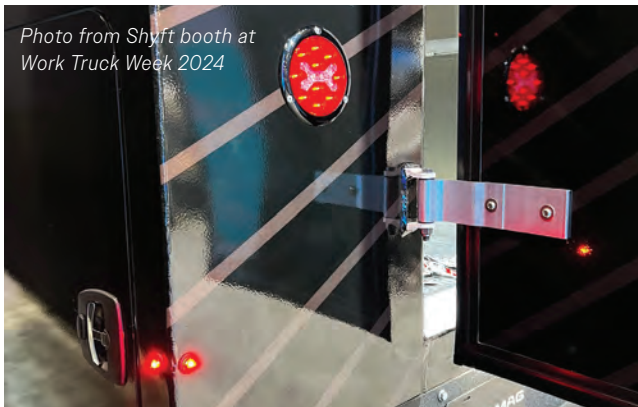
As the fastest-growing vehicle lighting and harness manufacturer in the U.S., Optronic International attributes its success to delivering innovative power delivery and lighting systems to its customers. Founded in 1972, Optronic is a global manufacturer of industrial and commercial vehicle safety lighting products and custom electrical wiring harnesses for commercial vehicle applications.

Optronic's new FusionX LED combination stop, tail, turn, backup and warning lights look like nothing else around and are the first of their kind to enable their brake function to override their warning function while in use.



Featuring a signature "X" LED lighting array in their centers, FusionX lamps are the newest members of Optronic's popular Fusion Series combination lamps.

Before the introduction of Optronic's Fusion Series LED combination lamps in 2014, vehicles used separate six-inch oval or four-inch round stop, tail, turn lamps and backup lamps. Each lamp needed its own mounting hole, and these holes were made in the vehicle body panels, frame posts, docking plates or gussets. Optronic Fusion lamps changed the equation by consolidating multiple lighting functions into a single lamp footprint, reducing complexity and cost, while



maintaining structural integrity. The addition of a compliant warning light function in the FusionX was a logical next step in the evolution of the Fusion Series.

Until now, combination stop/turn/tail lamps with warning light features have not met FMVSS 108 standards, because their flashing warning lights continue to operate even when their brake lights illuminate. The dual illumination patterns of these noncompliant lamps have the potential of confusing others on the road, by presenting them with mixed signals.

Optronic's FusionX LED combination lamps solve this problem by disabling the warning light function as soon as the brake light is illuminated. The warning override feature helps eliminate potential misinterpretations by others on the road or worksite and allows the FusionX to fully meet FMVSS 108 requirements. The lamps also meet the SAE J595 standard for Class 2 and Class 3 directional warning lamps.

INDUSTRY-LEADING LIFETIME LED WARRANTY

All LED DOT regulated lighting products from Optronic come with a no-hassle, one-diode lifetime warranty protection that will replace a lamp if even one diode fails. ●

Find out more, visit
www.optronicinc.com.



Optronics

USA HARNESS™



BUILT FOR A LIFETIME

SMOKE SERIES

It's been *half a century* since we first turned on the lights.

Today, Optronics is the fastest-growing vehicle lighting and harness manufacturer in the US, and we're on a mission to deliver **INNOVATIVE LIGHTING** and **RELIABLE SYSTEMS** to our customers. We couldn't do it without you—thank you!

1-800-364-5483 • sales@optronicsinc.com

www.optronicsinc.com

PowerStop

FOR WORK TRUCK FLEETS THAT NEED A “BRAKE”

PowerStop, a leader in brake solutions since 1995, is pleased to introduce Z47 Medium Duty & Fleet brake pads to its lineup of products for the Class 4 to 7 hydraulic brake vehicle market. This product adds to its already successful Z36 brake pads that many last mile fleets have found gives them a break on how often they must complete a brake job.

From Gordon Virginski, who recently joined PowerStop as their new National Sales Manager – Fleet Solutions, says “we are not just another brake supplier, as we supply a brake solution.” PowerStop understands the challenges fleet managers face by offering durable solutions to ensure low cost-per-mile and maximize vehicle uptime.

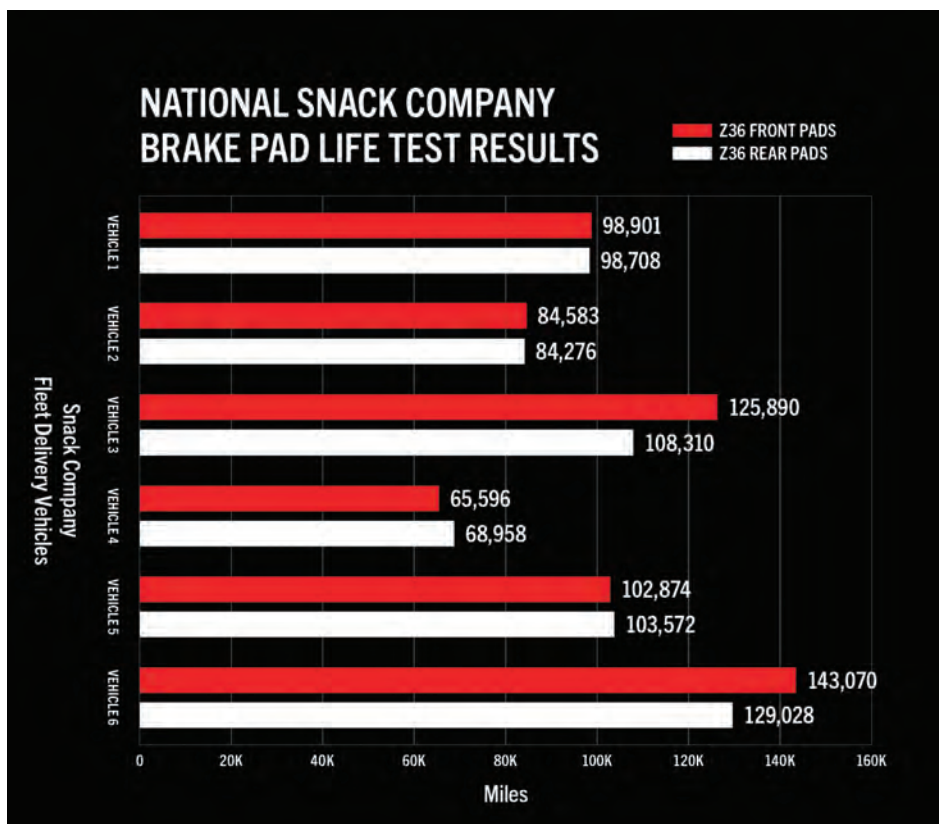
BRAKE SOLUTIONS FOR FLEETS

Virginski also says “our newest product, Z47 Medium Duty & Fleet brake pad, is carbon-fiber semi-metallic and designed to give the proper performance and ROI for vehicles running full gross vehicle weight daily such as delivery, shuttle bus, ambulance/fire rescue, utility companies, and many others.

This product, along with our Z36 Truck & Tow Carbon-Fiber Ceramic brake pads, gives last mile and normal duty medium duty fleets a complete product offering to reduce overall operating costs.”

The following chart helps fleet managers determine the appropriate PowerStop friction solution for their fleet needs.

MEDIUM DUTY COMMERCIAL OR LAST MILE NEEDS



RESULTS THAT SPEAK FOR THEMSELVES

PowerStop is also pleased to announce that it has already onboarded a large beverage and snack fleet and has been able to improve the brake life for their vehicles extensively.

PowerStop has been a leading brand that drivers rely on for their passenger braking needs and is looking to continue that same great success for fleet managers – helping them keep more vehicles on the road. ●

Find out more, visit www.powerstop.com/fleet.

POWERSTOP®

FLEET SOLUTIONS



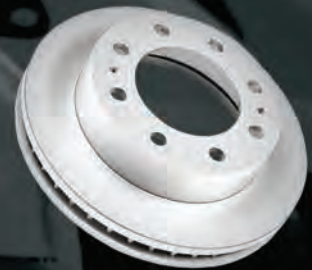
Z36 TRUCK & TOW SEVERE DUTY BRAKE PADS

Improved vehicle uptime and life of brake pads for last mile and normal duty MD fleets



Z47 MEDIUM DUTY & FLEET SEVERE DUTY BRAKE PADS

Carbon-fiber Semi-Metallic formula for increased performance when running fully loaded to GVW



EVOLUTION FULLY COATED ROTORS

Fully-coated and heat-cured rotor for protection from corrosion and rust, including cast-in tone rings

PowerStop, the fastest-growing brake brand in the aftermarket, is leveraging our performance heritage and reputation for premium products and innovation to introduce a fleet solution for medium duty, last mile and other work vehicles that keep North America moving!

INTRODUCING A PROGRAM FOR WHAT MATTERS MOST FOR FLEET MANAGERS

Efficient Cost-Per-Mile & Maximizing Vehicle Uptime

Expanded product assortment to cover myriad of fleet needs. Launching with focus on vehicles with “hydraulic brake systems”.

Includes solutions for popular commercial vehicles such as Transit, Sprinter, Promaster, Express, Freightliner, NV, Econoline, and other police and municipality applications.

Hannay

WORK TRUCK REELS YOU CAN COUNT ON


REELS THAT WON'T SLOW YOU DOWN

Work trucks are more than transportation to and from a jobsite; they also carry the important tools needed to get the job done. A work truck reel needs to be durable and easy to use. Because Hannay reels are engineered with decades of industry experience, they perform when you need them to. And, because Hannay uses only the sturdiest materials to build their reels, they last in even the harshest conditions.

REELS FOR EVERY INDUSTRY

Hannay reels are not one-size-fits-all. Just like your work truck, they're built for a variety of different applications and industries such as fuel delivery, liquid dispensing, hydraulic or pneumatic tools, lubrication, electric cable, lighting, and more. There are also reliable reels for washdown and pressure washing, vacuuming, gas and arc welding. With the **Hannay Reel Selector**, it's easy to identify the exact reel you need for your specific application.

BUILT WITH THE WORK IN MIND

No matter what the job or industry there's going to be a lot of equipment stored on a work truck. A good hose and reel complement a tool collection without getting in the way. Hannay reels are designed for quick and easy maintenance and smooth dispensing. They stand up to the punishment delivered by tough road conditions and harsh weather. 

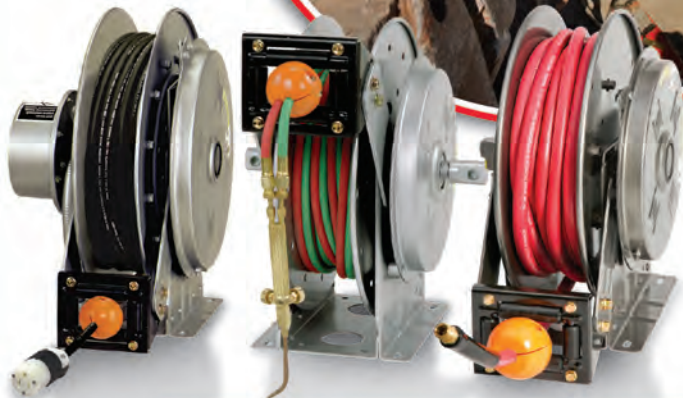
Find out more, visit www.hannay.com.



BUILT FOR THIS

CONVENIENT REEL PACKAGES HOSE OR CABLE PRE-INSTALLED

Whether you choose a standard reel package or a customized solution, Hannay offers unmatched performance and reliability.



▶ GET YOURS

HANNAY.COM | 877.467.3357

Minimizer: High Bar Brands

FIGHT CORROSION AND DIRT ON CAB FLOORS

Keeping the interior of work trucks clean is an arduous and sometimes impossible task.

Off-road and abusive environments can wreak havoc on cab floors, costing companies money when it comes time to sell their own trucks or return leased trucks.

Nobody wants damage to the interior of the cab, yet in-cab corrosion is one of the costliest issues facing companies that run garbage haulers, cement mixers, or bucket trucks—just to name a few applications—because drivers constantly enter and exit the cab due to the very nature of the work.

Since harmful elements enter the cab unavoidably and spills originating on the inside do happen, prevention and cleaning are key.

TWO PROBLEMS, ONE SOLUTION

One solution that helps accomplish both is custom molded, tray-style floor mats.

The raised edge prevents damaging chemicals, accidental spills, and the usual dirt and grime from escaping the mats, which are easily removed to make the cleaning process significantly shorter. Clean the mats with a simple hose or pressure washer, and leave them to dry. Shortly after, the mats can be reinserted to make the cab floor look new again.

Custom molded, tray-style floor mats are perfect for work trucks. Keep your trucks clean and nice with this no-brainer accessory that adds real value

to the truck. Improve resale value and create cleaner/safer working conditions throughout the life of the truck.

Minimizer offers custom molded floor mats for more than 70 Class 5, 6, 7, and 8 trucks. Find your model easily by visiting the website. Use the Floor Mat Selector Tool to find individual part numbers and see local and online buying options. ●

Find out more, visit
www.minimizer.com.



PROTECT YOUR CAB.

Minimizer Custom Molded Floor Mats

- ✓ TRAY-STYLE
- ✓ LASER-MEASURED
- ✓ GUARANTEED FOR LIFE

Learn more at minimizer.com

Minimizer.

MINIMIZER.COM | TESTED & TORTURED | 800.248.3855

Pressure Systems International

KEEPING COMMERCIAL VEHICLES ON THE ROAD FOR OVER 30 YEARS


Pressure Systems International (P.S.I.), a Clariance Technologies company, is the global leader in onboard tire management systems for commercial and recreational vehicles including automatic tire inflation systems (ATIS) for trailers, tire pressure monitoring systems (TireView TPMS) and the TireView Live data analytics portal that delivers real-time tire health.

Having the proper systems in place can help operators reduce the risk of tire-related issues and increase fuel economy. While a pre-trip inspection can be effective to verify proper inflation at the beginning of the trip, the driver does not have tire visibility after the vehicle leaves the terminal. The likelihood of tire damage such as punctures increases dramatically


when vehicles operate in off-highway environments. The loss of fuel economy, increased tread wear and the potential of a roadside call can be avoided with appropriate intervention. ATIS maintains your trailer's recommended cold tire pressure, while you drive!

Recognizing that fleets needed to improve their tire management program beyond just trailer tires, P.S.I. launched TireView TPMS, engineered to meet the needs of the commercial vehicle industry. With a signal booster that is standard in every kit, TireView offers unmatched signal reliability with a multitude of sensor types providing the best fit solutions for the fleet. All sensors are IP67-rated for dust and water intrusion.

P.S.I.'s TireView LIVE data analytics platform is just one of many offerings in the telematics market, which provides actionable data at a glance using vehicle data that has been pushed to the fleet's operations, reducing reliance on the driver. Depending on the access portal or telematics system, the fleet can access a "dashboard" that can give a tire health snapshot of all fleet assets. This allows maintenance or dispatch to make best decisions about scheduling maintenance or asset deployment.

All these solutions are designed to be easily retrofittable to existing equipment, and fleets of all sizes should consider one or more of these products to improve efficiency. 

www.psitireinflation.com



SMART FLEETS NEED SMART TIRES

- ✓ TIRE PRESSURE MONITORING FOR ANY CONFIGURATION.
- ✓ AUTOMATIC TIRE INFLATION FOR TRAILERS.

WHEEL SENSORS, REPEATER, DATA STREAM TELEMATICS, IN-CAB DISPLAY, ONLINE & MOBILE PORTAL, YOUR TELEMATICS PROVIDER, LIVE, REAL-TIME, CUSTOMIZABLE, PREDICTIVE MAINTENANCE.

P.S.I. A Clariance Technologies Company
PRESSURE SYSTEMS INTERNATIONAL

PSI THE INFLATION SYSTEM **TIREVIEW**

www.psitireinflation.com

© 2024 Pressure Systems International, LLC. A Clariance Technologies Company. P.S.I. products are covered by one or more U.S. Patents: www.psitireinflation.com/ip

VMAC

GET MORE DONE WITH HYDRAULIC AIR COMPRESSORS

VMAC's hydraulic rotary screw air compressors are small yet mighty air systems that help you get more done! Available in 40 CFM and 60 CFM models, VMAC's H40 and H60 are ideal for hardworking service truck professionals who want to maximize their time.

AIR ON DEMAND

Operators using VMAC's hydraulic air compressors can complete jobs faster and easier, helping you work more efficiently.

H40 and H60 air compressors operate at 100 percent duty cycle, which means the system generates air as quickly as it's consumed, so you never have to wait to use compressed air. In an industry where every moment

is valuable, these time and cost-savings can add up significantly.

POWERFUL ROTARY SCREW TECHNOLOGY

VMAC's hydraulic air compressors also feature rotary screw technology, a superior option to reciprocating air compressors. Four consecutive annual surveys have confirmed four out of five service truck professionals strongly prefer rotary screw air compressors. The number one reason for this preference is performance.

The VMAC H40 and H60 deliver significant amounts of air from a small, compact package with consistent air output and pressure. You can work confidently, knowing your air

compressor is ready for every job that comes your way.

MINIMAL DOWNTIME FOR MAINTENANCE

The second reason survey respondents favored rotary screw air compressors is because of their quality and reliability. VMAC takes this one step further with rigorous quality control, ensuring every hydraulic compressor is ready to withstand the rigors of every climate.

The H40 and H60 are intentionally designed for minimal maintenance with quick servicing, giving you more time to focus on the jobs that matter most. ●

Find out more, visit
www.vmacair.com/hydraulic

VMAC'S HYDRAULIC AIR COMPRESSOR EMPOWERS YOU... TO GET MORE DONE



- » 81% of service truck professionals prefer rotary screw air compressors
- » More reliable & powerful than reciprocating
- » Up to 60 CFM at 100% duty cycle
- » Gets jobs done faster & easier

Get The Specs: VMACAIR.com/hydraulic





High Voltage DC Contactors from Littelfuse

DC Contactors from Littelfuse are a high-current and high-voltage solution for disconnecting DC energy sources in 48V applications requiring continuous run time. Their space-saving design allows these remote-operated contactors to be mounted easily in any orientation, making them simple to incorporate into battery electric vehicles, hybrid vehicles, heavy-duty trucks and more.



For stocking information visit waytekwire.com/Littelfuse_HVContactors

Waytek, Inc.

ELECTRICAL SYSTEM NECESSITIES

Waytek, Inc. distributes automotive wire and electrical components across North America. Waytek partners with premier quality product manufacturers. With a mission to provide an exceptional customer experience, Waytek does its part so its customers can do theirs.

Switches: Waytek stocks automotive switches from ignition and electrical pressure switches to toggle, rocker, temperature, wiper switches, and more.

Battery Management: The company offers products designed to help maintain the complex battery systems in modern work vehicles. Products include battery chargers, battery disconnects, isolators and separators, converters and equalizers, and low voltage disconnects.

Power Distribution: Waytek's products for optimizing secondary power distribution include fuse blocks, fuse holders, and power distribution modules.

Relays: Waytek provides electrical relays, contactors, resistors, and solenoids in many configurations. Relays are available in mini, micro, maxi, and power relay styles. DC power contactor relays come in isolated or grounded coil styles. Solenoids are available in continuous and intermittent duty with weatherproof varieties.

Fuses: Waytek stocks automotive fuses from leading manufacturers such as Eaton and Littelfuse. Fuse types include blade, bolt down, cartridge, and industrial glass and ceramic fuses. Waytek also offers fuse assortment kits and accessories including fuse blocks, fuse holders, fuse clips, fuse and circuit taps, and battery terminals.

Circuit Breakers: Waytek carries hundreds of automotive circuit breakers for auxiliary and accessory circuits on work trucks. From auto reset and blade type circuit breakers to short stop, high-amp, and marine-rated circuit breakers, Waytek's selection covers all electrical projects.

Waytek also offers wire and cable, terminals and connectors, lights, crimping and stripping tools, chargers and alarms, and wire management products including coverings, cable ties, tapes, and clamps. Waytek provides everything needed to build and maintain electrical systems in today's work trucks. ●

Find out more, visit www.waytekwire.com.

Coxreels

XTM DUAL HYDRAULIC SERIES

XTM Dual Hydraulic Series features:

- For applications where dual hydraulic lines are required.
- Coxreels' single-sided, dual-bodied hydraulic swivel is unique in the industry and for the inlet connections to both be on the same side of the reel.
- The hose included on with-hose models is a twin-line fully bonded hose for smooth performance and handling.
- It is rated to 2500 PSI and combines the ultimate features into the world's most robust reel solution.
- Features stainless steel rollers directly integrated into the all-welded steel box frame.
- It comes equipped with dual permanently lubricated bearings, rigidly fixing the drum assembly to the solid 1" steel axle for consistent stability, while still maintaining the single sided dual external fluid path.
- Swivel retainers prevent unwanted vibratory loosening of threaded components and easily accessible ratcheting mechanisms.
- High temperature, steel core arbors transfer powerful heavy duty spring motor torque to multiple supported axle.

www.coxreels.com



COXREELS

WHAT'S ON YOUR TRUCK?

GET QUALITY YOU CAN TRUST!

PRO GRADE HOSE, CORD, & CABLE REELS

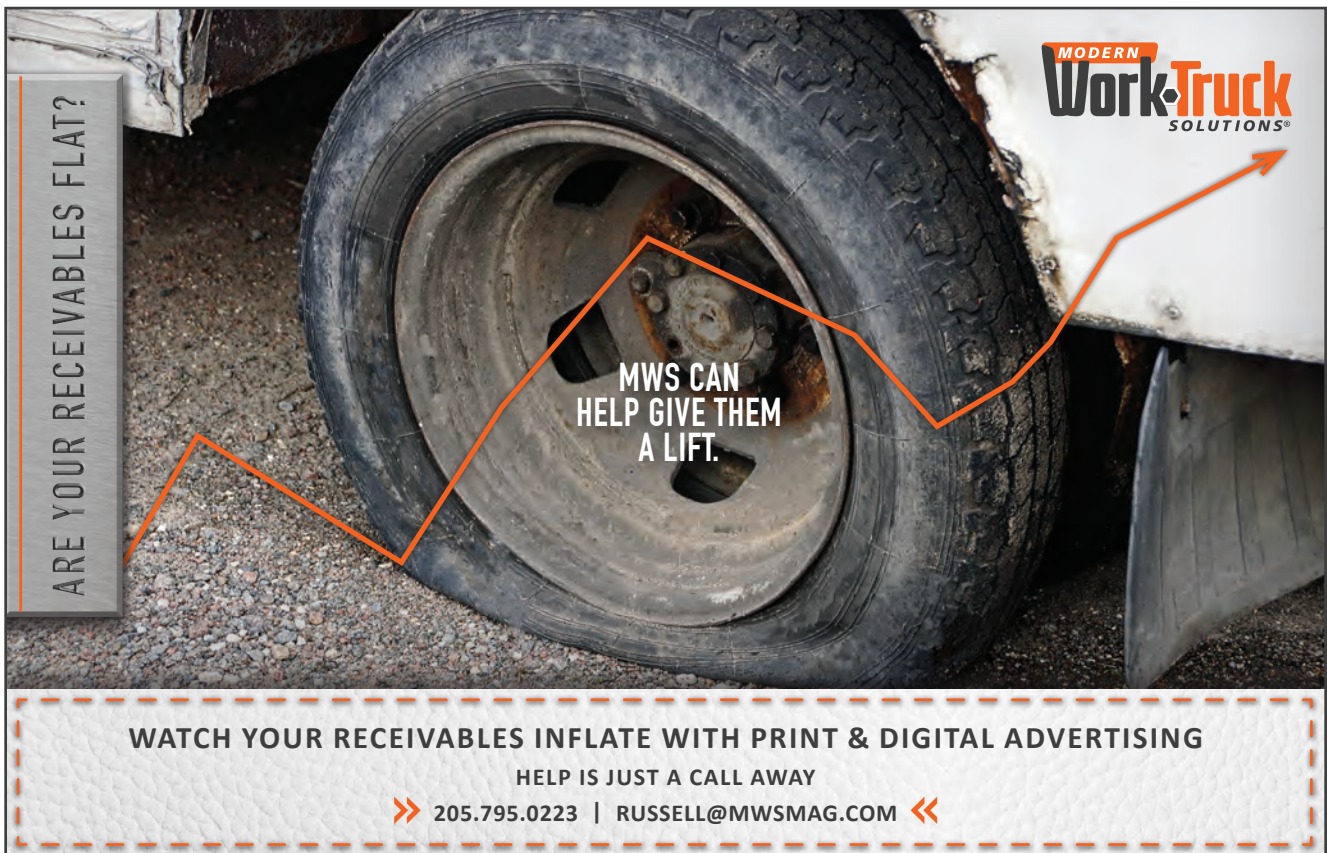
Versatile Reel Applications, Configurations, & Mounting Solutions Available for **YOUR WORK TRUCK** Operations.

MADE IN THE USA SINCE 1923

TOLL FREE | 800.269.7335

FOLLOW US:    

LEARN MORE: WWW.COXREELS.COM



ARE YOUR RECEIVABLES FLAT?

MWS CAN HELP GIVE THEM A LIFT.

MODERN Work Truck SOLUTIONS

WATCH YOUR RECEIVABLES INFLATE WITH PRINT & DIGITAL ADVERTISING

HELP IS JUST A CALL AWAY

» 205.795.0223 | RUSSELL@MWSMAG.COM «