



Must-See Exhibitors

*Indianapolis
2020*



BOLT®

BREAKTHROUGH ONE-KEY LOCK TECHNOLOGY

BOLT® Locks are integrated by many of the major truck cap and tonneau cover manufacturers throughout the industry as a result of its “Breakthrough One-Key Lock Technology” as the ultimate in lock convenience. ARE, Leer, SnugTop, Royal Truck Body, and other manufacturers are now incorporating BOLT Lock technology into their products. Designed to reduce key clutter using only the vehicle’s ignition key in all of the locks produced by the company, BOLT Locks are permanently programmed upon the first insertion of the ignition key into the lock. Drivers can feel secure knowing that the locks include anti-pick technology and can only be unlocked by their vehicle’s ignition key, protecting the contents inside the truck bed.

Commercial truck drivers or contractors who use their trucks to transport and store their equipment benefit from BOLT Locks because they ensure that the equipment is safe when parked on company property or on-site, as well as at any stop between destinations. Trucks, caps, padlocks, and trailer locks can all be unlocked using the same key that unlocks the truck door and starts the truck’s engine. All BOLT Locks feature a limited lifetime warranty and are manufactured with an electroless nickel-plated carbon steel pin or shaft assembly/shield for strength and durability and include an automotive-grade stainless steel lock shutter, a durable, protective rubber shell, and a six-plate tumbler sidebar that prevents picking and bumping.

www.boltlock.com

Booth #4780



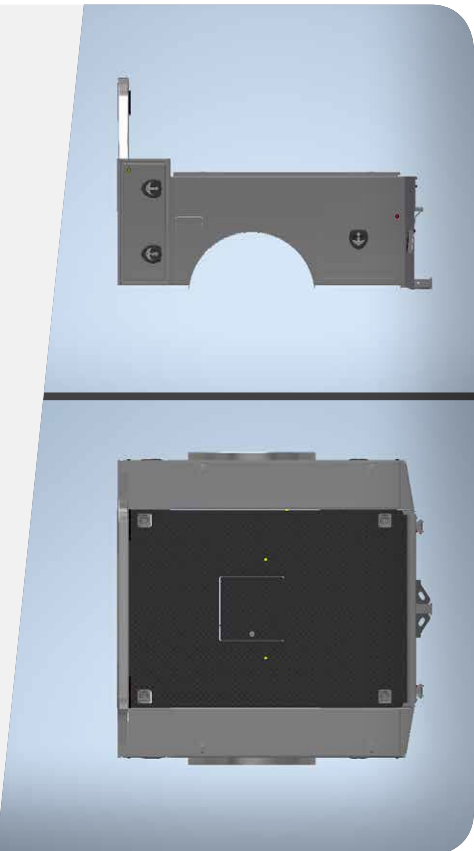
Crownline

By Ground Zero

Need a work bed that functions as a box bed? Crownline has the one for you with enough storage for all your work tools and the ability to pull a trailer in style. Crownline’s bed features durability, quality, and versatility. It features two side boxes and two top boxes for any storage need and four inset steel tie down rings inside the bed for those with the need to strap down a load. Crownline only uses LED lights for better visibility and lower maintenance costs. The sealed harnesses installed on these beds are designed to withstand all weather conditions. The receiver hitch is rated at 12,000 lbs, and the gooseneck is 30,000 lbs for your towing needs. Every stock product is shot blasted and powder coated to provide protection for years to come. Check out Crownline’s affordable yet durable brand of products and the options the brand offers. You’re not likely to find a more durable high-quality bed on the market with the versatility of a Crownline. Crownline: More durable than the competition and built to last.

www.crownlinebygz.com

Booth #5505





One of the work truck industry's preferred tool drawer storage solutions, MotionLatch™ Tool Drawers, just got a lot more secure. CTech now offers a brand new "Full-Bank" drawer locking option. This innovation was driven by customer requests and developed by CTech's engineering team to add "one-key, one-motion" security for an entire bank of drawers without adding considerable weight to the aluminum construction or reducing product longevity. MotionLatch Tool Drawers are available in nearly any size for any application with an industry-leading 10 business day targeted manufacturing lead time.

To go along with the new locking solution, locks are also available in single-drawer or full-bank configurations and retain the "one-hand, one-motion" function of CTech's full-length, dual-latching drawer system. Few storage manufacturers build such efficient, accessible, and now such secure Tool Drawer units. CTech's customers drive innovation, and in return the brand continually reinvests in its processes and offerings in order to provide unbeatable product quality, reliability, and customer service. When your livelihood depends on tool/equipment storage, you can rest assured that MotionLatch Tool Drawers were engineered with you in mind. The new lock option is also available for all CTech carts, cabinets, drawers, and tactical solutions.

www.ctechmanufacturing.com

Booth #319



Since 1997, Dakota Bodies has designed and manufactured utility and service truck bodies.

Over those years, the company has grown into two manufacturing and training facilities in Watertown, South Dakota, and recently added a manufacturing facility in Liberty, Missouri, to support production demands.

What makes Dakota Bodies stand out is its innate ability to design and provide custom solutions for each body manufactured. Every trade requires different skills and specific tools, which is why Dakota Bodies thinks it is important that your truck body functions exactly how you need. Dakota Bodies' skilled team of experienced designers works diligently to create bodies that are effective for specific applications. Dakota Bodies is continually developing new and improved solutions for today's transportation needs. Dakota Bodies' commitment to excellence and customer satisfaction is what keeps it growing.

The history of growth and innovation has led the company to be one of the nation's top choices in the utility and service industries. As a growing manufacturer, Dakota Bodies continues to invest in its future with new technologies and techniques to better serve its customers and employees.

www.dakotabodies.com

Booth #4481



EXTENDOBED

Extendobed invented the first telescoping truck/van bed extender in 1987. Extendobed builds only industrial-grade products, which is why companies like Idaho Power, Conoco-Phillips, Dow, Terminix, and SW Gas, as well as the US Military, FBI, and over 1,500 fire and police departments choose Extendobed. For work vans, Extendobed now offers both Extendobed® and ExtendoWall™, which can be designed to extend from the back or side doors. ExtendoWall is available in optional half-bed or full-bed widths. No other company offers:

- Extension past the taillights—over 110%—to allow access to the entire bed
- Load capacities up to 3,000 lbs
- Reduced workers comp injuries to backs, arms, and legs
- Increased productivity of workers—more calls/day completed, no time wasted looking for items
- Fully customizable designs for trucks, vans, service bodies, and trailers
- 20-year warranty means lower cost of ownership; units regularly transferred from vehicle to vehicle

Mention “MWT” in your email to websales@extendobed.com for a free custom design and quote.

www.extendobed.com

Booth #2473



Hannay Reels®

The reel leader.

Hannay Reels offers durable reels for a variety of work truck applications—from maintenance bay dispensing to battery charging lines. Its compact reels are designed with a small footprint, allowing them to fit into tight spaces and compartments. Hannay work truck reels also offer the flexibility of multiple mounting options. Reels can be truck-, trailer- or garage-mounted, on wheels or carried by hand, catering to a wide range of applications. The reels themselves are built to withstand the toughest road conditions and suited for use day in and day out.

While Hannay reels are engineered to rarely require maintenance, when they do, bolted-on components and conveniently located swivel joints make servicing a Hannay reel quick and trouble free.

At NTEA 2020, the company will display some of its most popular reels for the work truck industry. These include the portable GHAT-1100, the heavy-duty power rewind E1500, the spring rewind N400 and N700, as well as the portable WCR11-17-19.

www.hannay.com

Booth #5646





ISUZU

Isuzu Commercial Truck of America, Inc.

For over 35 years Isuzu has been leading the charge in low cab forward trucks. The Isuzu brand was named the “Best-selling Low Cab Forward Truck in America” since 1986 and still holds that title today. Well known in the industry for their quality and performance, Isuzu trucks provide their owners longevity and peace of mind. At the Work Truck Show, Isuzu Commercial Truck of America will share details on its advancements and plans for the future in the low cab forward segment.

www.isuzucv.com

Booth #4639



LUVERNE®

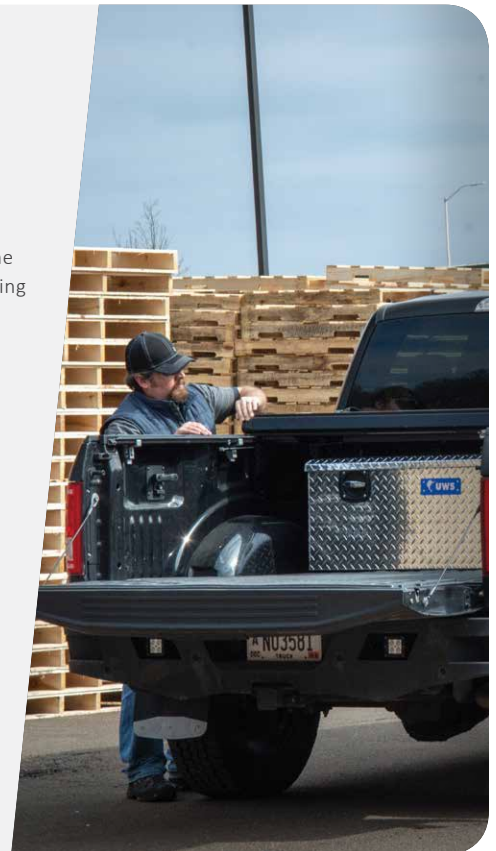
For your fleet truck or van, CURT Group’s CURT, LUVERNE, ARIES, and UWS products provide the functionality, safety, and professional style you require for your business. The companies offer towing products, cargo solutions, running boards, and grille guards, giving you a complete solution to outfit your fleet.

LUVERNE has manufactured quality automotive accessories in the United States since 1963. Its brand is nationally known and respected and offers a broad base of quality, functional aftermarket accessories for pickup trucks and commercial vans.

CURT offers a complete line of towing products and is the leading manufacturer of USA-made custom-fit trailer hitches. It offers the broadest selection of custom-fit receiver hitches for nearly every vehicle on the road today. It also offers gooseneck, fifth wheel, and weight distribution hitches.

www.luvernetruck.com

Booth #4347





As the fastest-growing vehicle lighting manufacturer in the US, Optronics International attributes its success to delivering better value, better options, and better lighting systems to its customers. Founded in 1972, Optronics International is a premier global manufacturer of industrial and commercial vehicular safety lighting and power delivery products. The company specializes in complete electrical solutions for interior and exterior LED and incandescent lighting as well as harnessing for the HD, trailer, transit vehicle, RV, and marine markets. Its recent acquisition of USA Harness makes Optronics the newest of only a few manufacturers capable of fully serving the light-, medium- and heavy-duty commercial vehicle industry with both lighting and harness technologies. The industry will benefit from increased competition and a broader array of advanced, integrated, custom power delivery and lighting solutions. The company's patented USA-PLUS sealed wiring harness systems are simple for OEMs to install and use the USA-PLUS Connection System throughout. Pairing USA-PLUS power delivery technology with one of its many patented lighting options, Optronics can deliver complete harness and lighting systems designed just for you.

www.optronicsinc.com

Booth #5191

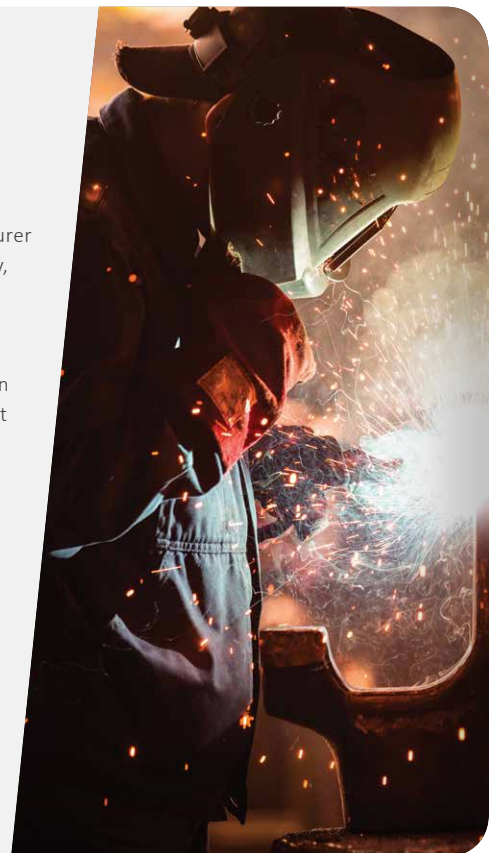


Established in 1955, Reading Truck Group is an award-winning and innovative manufacturer of truck bodies and equipment. The Reading Truck Group consists of Reading Truck Body, the manufacturing arm of the business, and Reading Truck Equipment, the company-owned distribution and installation business. For 65 years, Reading has grown into one of the leading and largest truck equipment manufacturers in the United States. Based in Reading, Pennsylvania, as well as Claremore, Oklahoma, all products are proudly made in the United States using premium materials and advanced manufacturing techniques that ensure longevity and durability in the harshest of jobsites.

Visit Reading at the 2020 Work Truck Show as the brand unveils two exciting enhancements to its product line.

www.readingbody.com

Booth #5149



SAFE FLEET

Driving Safety Forward™

Safe Fleet, a leading global provider of smart safety solutions for fleet vehicles, designs and manufactures material racks, cargo tarps, access products, van interior organizational systems, and video systems for a one-stop integrated safety platform. Depend on the names you trust: Prime Design, ROM, Bustin, Randall, FRC, American Van, Seon, RVS, Pulltarps, and Roll-Rite.

New products include the strong and secure Over the Cab Material Rack and innovative Cantilever Shelving systems for van and delivery trucks working that final mile.

Stop by booth #921 to check out all of Safe Fleet's safety and productivity solutions. Safe Fleet is dedicated to innovation and delivering the smart solutions that fleets need to ensure drivers, passengers, first responders, in-the-field workers, and pedestrians all arrive home safely.

www.safefleet.net

Booth #921



Sage OIL VAC

Change oil faster, stay cleaner throughout the day, and enjoy a lower cost of ownership. Sage Oil Vac equipment does it better and the brand is ready to tell you why. Its competitors use diaphragm pump extraction methods, but that technology needs constant, high-volume compressed air while you're operating. Sage Oil Vac uses no-pump vacuum technology to pull oil quickly and efficiently from equipment without any moving parts. No pumps with Sage means fewer maintenance problems for a lower cost of ownership. With solutions as big as Sage Oil Vac's Class 8 trucks, as small as its lube carts, or as customized as its LubeBuilder™ systems, there's a right fit for every operation. Contact your local Sage Oil Vac dealer to find out how Sage Oil Vac can upfit your dedicated maintenance vehicle or match you with a pre-built system to get your jobs done quicker than before.

www.sageoilvac.com

Booth #3067

